



BUDVABLUE

apartments

www.budvablue.com



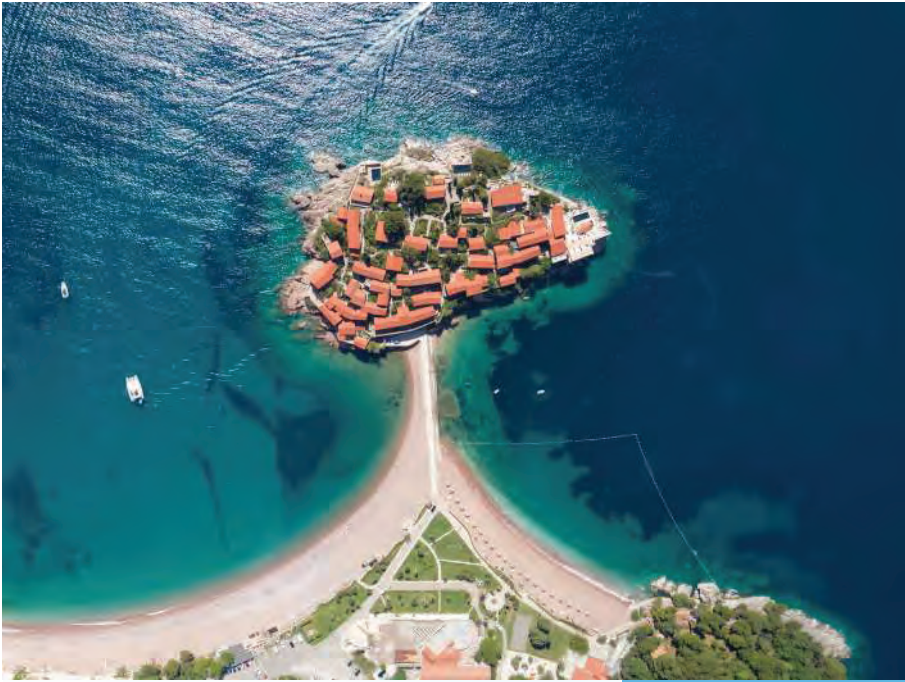
BUDVABLUE

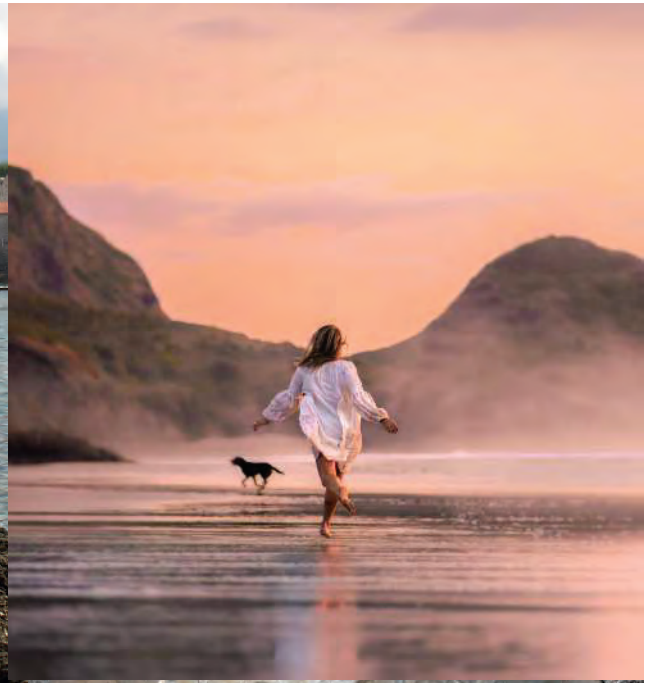
apartments



A NEW WAVE OF LIFE







BUDVA

THE CITY OF THE SEA, NATURE AND HISTORY.

Montenegro's stock as a vacation destination has risen meteorically in recent years, as word-of-mouth of this small country's sensational mix of sun-drenched old towns, sparkling pebble-strewn beaches and beautiful mountains has gotten out, big time.

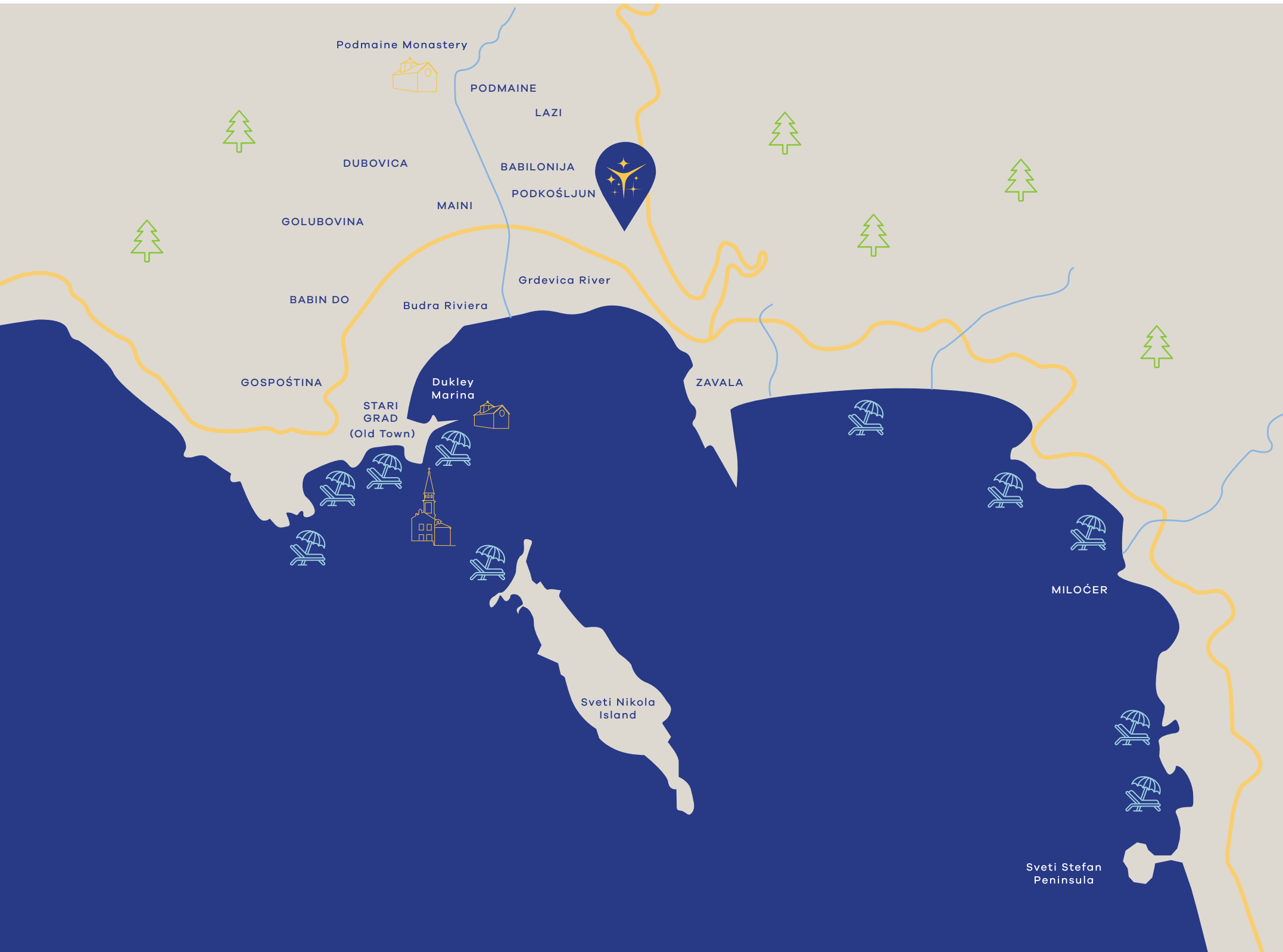
Touristic Places in Budva

BUDVA RIVIERA BEACH 1 km.
MORGEN BEACH 3 km.
AVALA CASINO 3 km.
DIVING CLUB 3 km.
STARI GRAD 3 km.
PLAZA RICARDOVA GLAVA BEACH 3 km.
BECICI 4 km.
TOP HILL CLUB 4 km.
AQUAPARK BUDVA 4 km.
JAZ BEACH 8 km.
SVETI STEFAN 9 km.

Touristic Places in Montenegro

BUDVA: Sveti Stefan 9 km.
TIVAT: Porto Montenegro 26 km.
KOTOR: Our Lady of the Rocks Island 38 km.
BAR: Stari Bar 42 km.
CETINJE: Njegos Mausoleum 20 km.
ULCINJ: Old Town 65 km.
PODGORICA: Skadar Lake 25 km.
KOLASIN: Kolasin 1600 Ski Center 145 km.
ZABLJAK: Durmitor National Park
and Black Lake 185 km.

TIVAT AIRPORT 22 km. / KOTOR 24 km. / PERAST 36 km. / BAR 38 km. / HERCEG NOVI 44 km.
PODGORICA AIRPORT 70 km. / SHKODRA 85 km. / DUBROVNIK 92 km. / TIRAN 175 km.
SARAJEVO 286 km. / BELGRADE 534 km. / SOFIA 630 km. / ZAGREB 716 km.










BUDVABLUE
apartments




BUDVABLUE
apartments




BUDVABLUE
apartments


BUDVABLUE
apartments

GARAGE A



**BUDVABLUE**
apartments

Budvablue:
A New Wave of Life.

Budvablue has construction area of 3266 m²
on a land of 1597 m².

Budvablue has total of 46 apartments
with natural luxury.

Block A:

2+1, 8 apartments
1+1, 16 apartments
1+0, 7 apartments.

Block B:

2+1, 8 apartmnts
1+1, 4 apartments
1+0, 3 apartments.

Block A



Block B





workspace

BUDVABLUE
apartments
workspace





AMENITIES

- Playground Budvablue
 - Cafe Budvablue
 - Fitness Room
 - Workspace
 - Reception
- Parking Spaces
- Luggage Room

SPECIFICATIONS

- 7/24 CCTV camera system,
 - Elevators,
- Acrylic panel kitchen cabinets and worktops,
 - Fully equipped bathrooms and boilers,
 - Steel apartment doors,
 - Air condontioner,
- Heat and sound isolated windows,
 - Laminated wood floorings,
 - Intercom system with video.



CAFE BUDVABLUE

CHILL • DRINK • SOCIALISE

Cafe Budvablue is right next to block B, a corner where you can have a cup of coffee in a quiet environment after a long day. You can also watch your children having fun in the playground and socialize with other building residents.



Cafe Budvablue



Playground Budvablue



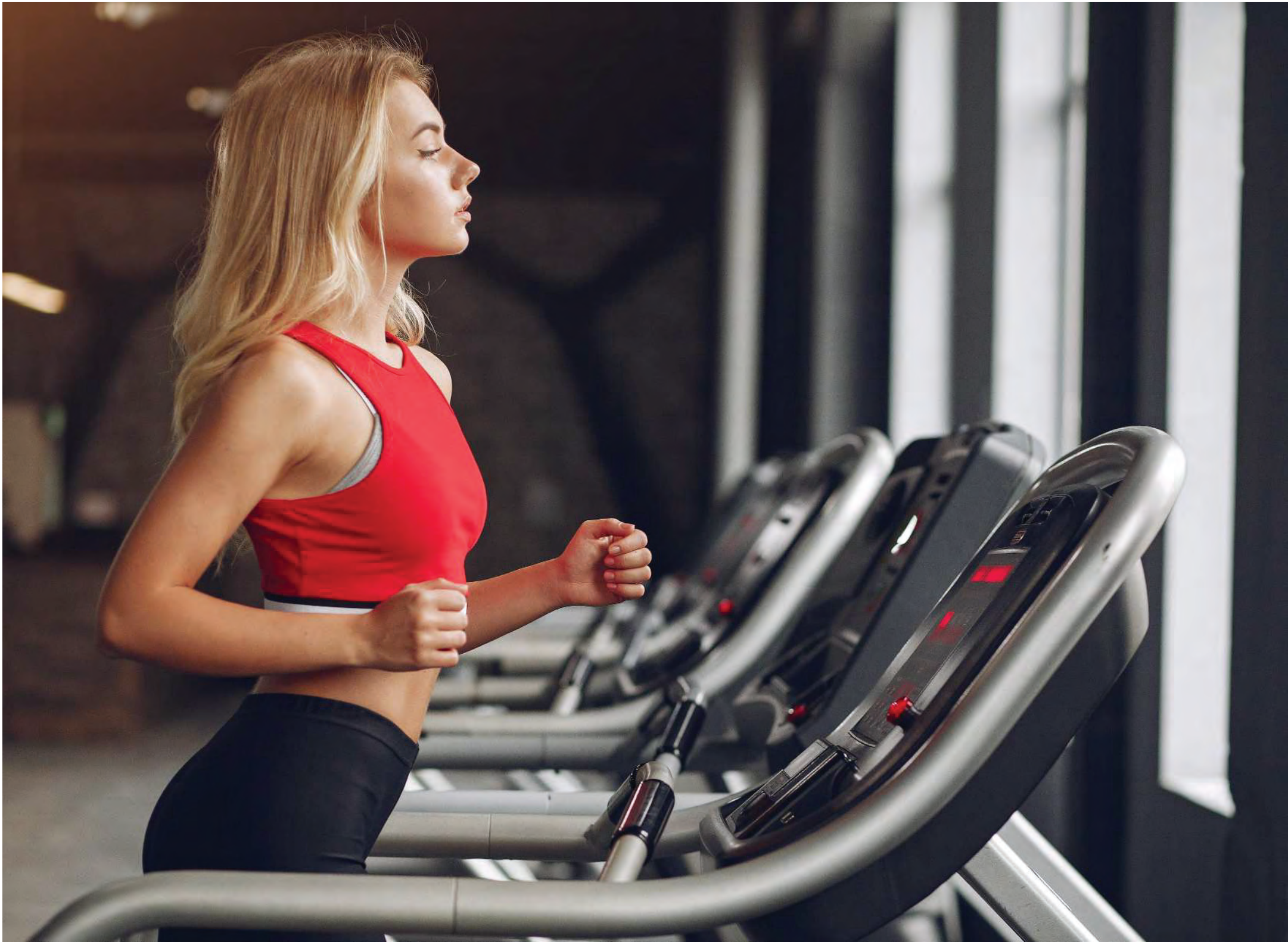


PLAYGROUND BUDVABLUE

FUN • PLAY • SOCIALISE

While planning the Budvablue project, we did not forget our children, who are our future. Playground Budvablue is an area where your children can have fun safely. Here they can socialize with other children and make new holiday friends.







Fitness

Always stay fit!

LIVE BUDVA
eat, play, love, rest.





Reception



A stylish reception welcomes you at the entrance of Budvablue.

Workspace



Don't miss your work while on vacation. A quiet workspace will be waiting for you, which you can reach by passing through the reception.

Parking Spaces



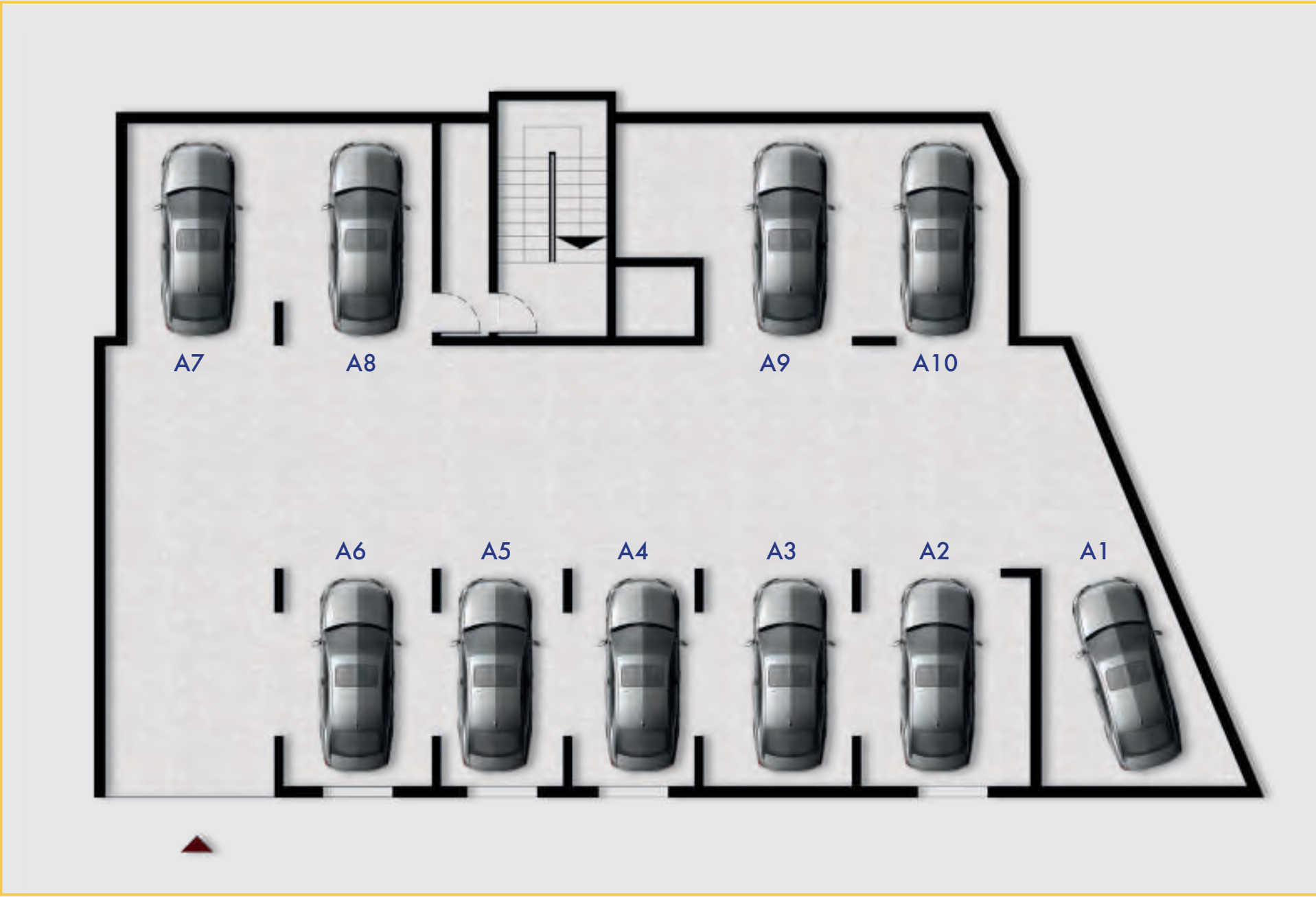


CAR PARK INDOOR • OUTDOOR

Budvablue apartment complex has numerous indoor and outdoor parking spaces. Sufficient parking space is provided for you and your guests. You won't have to worry about looking for a parking space for your car after a long day. Parking spaces are sold separately.



Garage **A** - Indoor





BLOCK A



BLOCK B

APARTMENT LAYOUT

FLOOR	NO	FACADE	ROOM	NET m2	GROSS m2
1 st	A20	BACK-FOREST	2+1	40,52	46,02
	A21	FRONT-FOREST	2+1	49,58	55,31
	A22	FRONT	1+1	57,68	62,48
	A23	FRONT	1+1	57,68	62,48
	A24	FRONT-SEA	2+1	58,44	65,31
	A25	BACK-SEA	1+1	44,49	50,29
2 nd	A26	BACK-FOREST	2+1	40,52	46,02
	A27	FRONT-FOREST	2+1	49,58	55,31
	A28	FRONT	1+1	57,68	62,48
	A29	FRONT	1+1	57,68	62,48
	A30	FRONT-SEA	2+1	58,44	65,31
	A31	BACK-SEA	1+1	44,49	50,29
3 rd	A32	BACK-FOREST	2+1	40,52	46,02
	A33	FRONT-FOREST	2+1	49,58	55,31
	A34	FRONT	1+1	57,68	62,48
	A35	FRONT	1+1	57,68	62,48
	A36	FRONT-SEA	2+1	58,44	65,31
	A37	BACK-SEA	1+1	44,49	50,29
4 th	A38	BACK-FOREST	2+1	40,52	46,02
	A39	FRONT-FOREST	2+1	49,58	55,31
	A40	FRONT	1+1	57,68	62,48
	A41	FRONT	1+1	57,68	62,48
	A42	FRONT-SEA	2+1	58,44	65,31
	A43	BACK-SEA	1+1	44,49	50,29

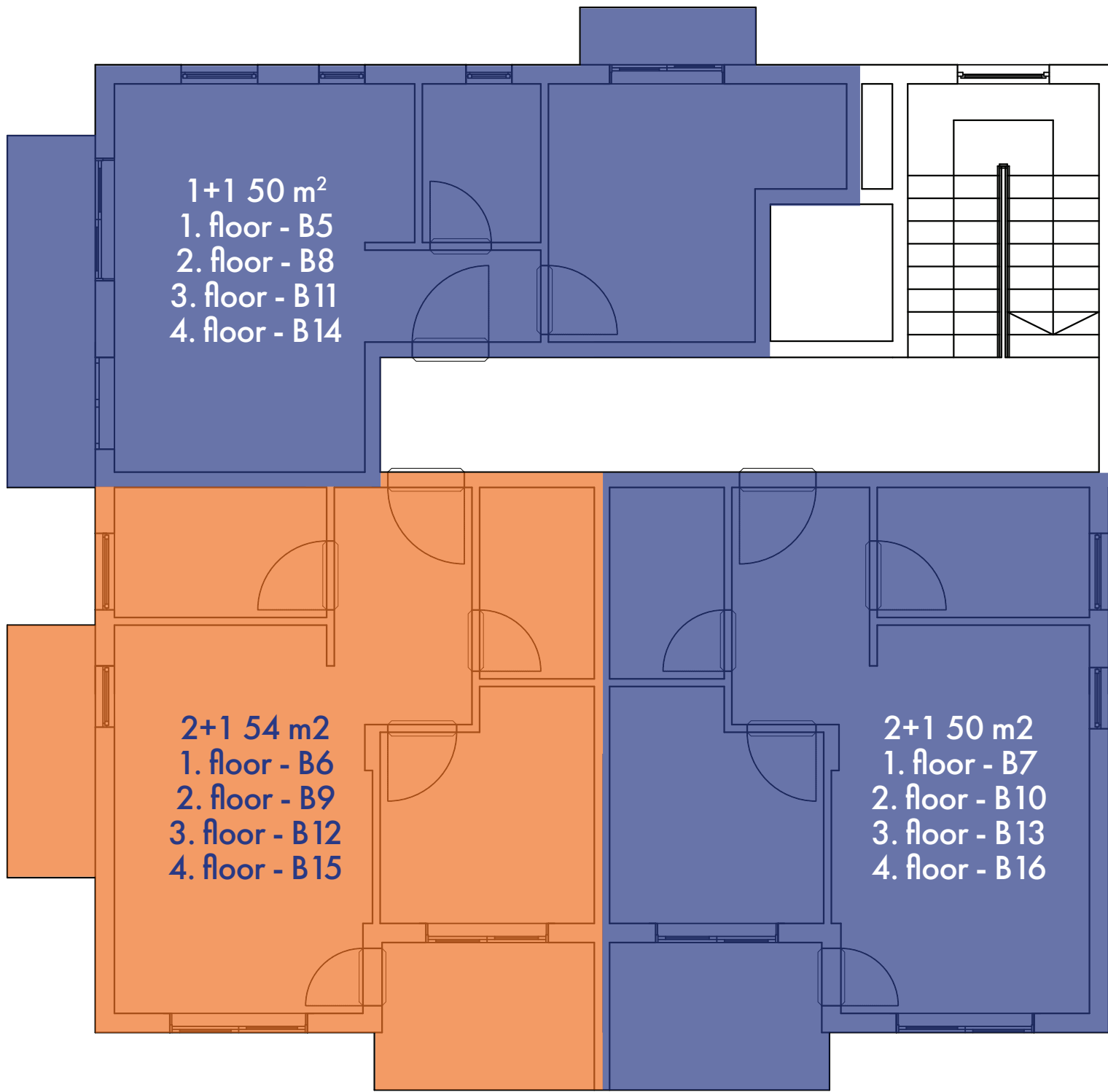
BLOCK A APARTMENT LIST

FLOOR	NO	FACADE	ROOM	NET m2	GROSS m2
1 st	B5	FRONT-FOREST	1+1	43,34	50,74
	B6	FRONT-SEA	2+1	48,36	54,19
	B7	BACK-SEA	2+1	44,77	50,79
2 nd	B8	FRONT-FOREST	1+1	43,34	50,74
	B9	FRONT-SEA	2+1	48,36	54,19
	B10	BACK-SEA	2+1	44,77	50,79
3 rd	B11	FRONT-FOREST	1+1	43,34	50,74
	B12	FRONT-SEA	2+1	48,36	54,19
	B13	BACK-SEA	2+1	44,77	50,79
4 th	B14	FRONT-FOREST	1+1	43,34	50,74
	B15	FRONT-SEA	2+1	48,36	54,19
	B16	BACK-SEA	2+1	44,77	50,79

BLOCK B APARTMENT LIST



BLOCK A



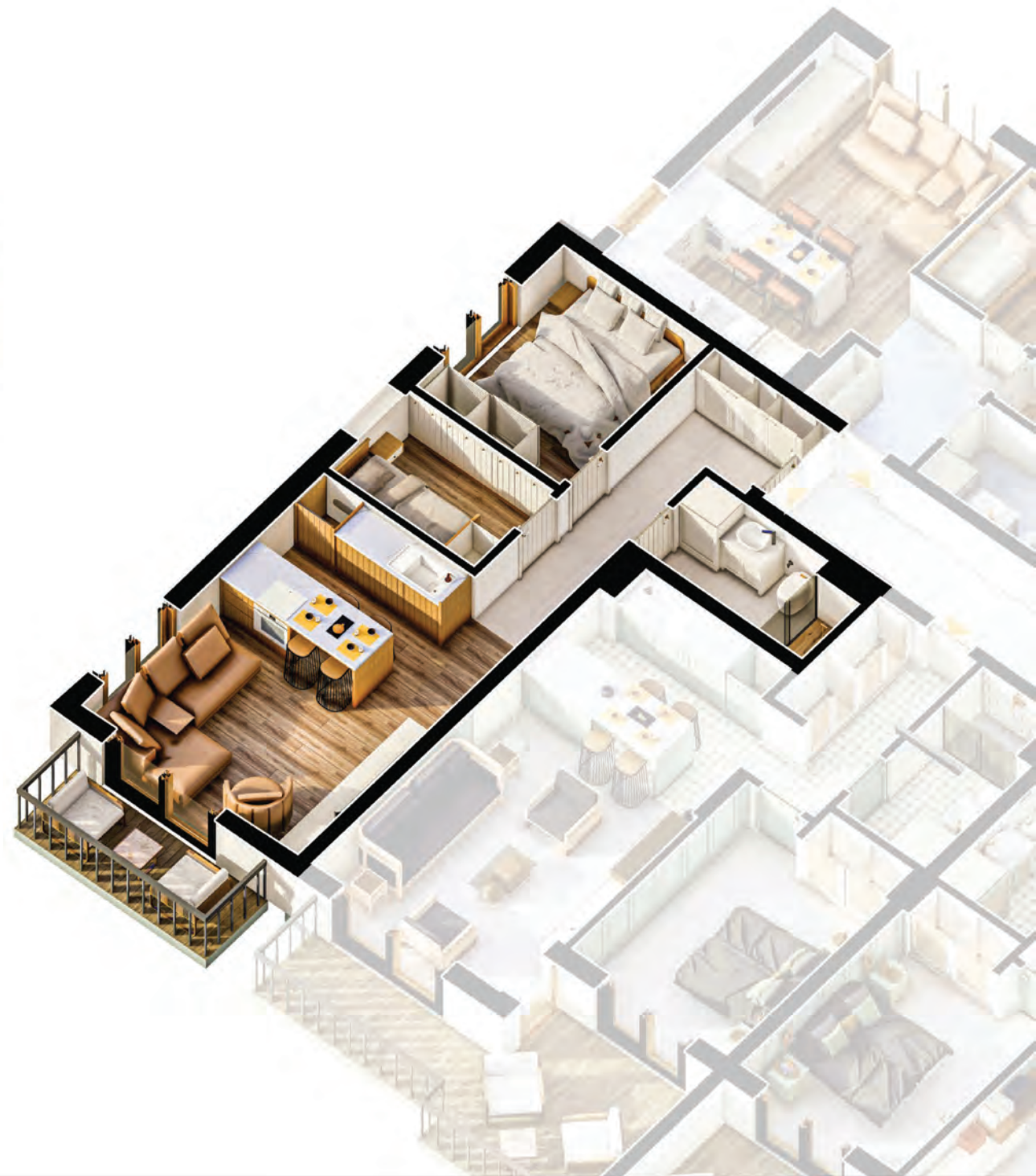
BLOCK B



2+1 46 m²
 A20 / A26 / A32 / A38

1) Entryway	5,59 m ²
2) Living Room	16,95 m ²
3) Bedroom	8,83 m ²
4) Bedroom	4,70 m ²
5) Bathroom	4,45 m ²

Net Area 39,04 m²
Gross Area 46,02 m²



2+1 55 m²
A21 / A27 / A33 / A39

- 1) Entryway.....7,16 m²
- 2) Living Room16,67 m²
- 3) Bedroom7,98 m²
- 4) Bedroom4,48 m²
- 5) Bathroom4,33 m²

- 6) Balcony.....4,58 m²
- Net Area49,58 m²**
- Gross Area55,31 m²**



1+1 62 m²
 A22 / A28 / A34 / A40
 A23 / A29 / A35 / A41

- 1) Entryway..... 5,57 m²
- 2) Living Room 22,64 m²
- 3) Bedroom 11,83 m²
- 4) Bathroom 4,94 m²
- 5) Balcony..... 12,69 m²

Net Area 57,68 m²
Gross Area 62,48 m²



2+1 65 m²

A24 / A30 / A36 / A42

1) Entryway.....	6,00 m ²
2) Living Room	23,39 m ²
3) Bedroom	7,98 m ²
4) Bedroom	4,78 m ²
5) Bathroom	4,83 m ²

6) Balcony.....	5,39 m ²
7) Balcony.....	3,51 m ²
8) Balcony.....	2,54 m ²
Net Area	57,49 m²
Gross Area	65,31 m²



1+1 50 m²
 A25 / A31 / A37 / A43

- 1) Entryway..... 5,54 m²
- 2) Living Room 20,25 m²
- 3) Bedroom 9,54 m²
- 4) Bathroom 4,76 m²
- 5) Balcony..... 4,40 m²

Net Area 43,57 m²
Gross Area 50,29 m²



1+1 50 m²
 B5 / B8 / B11 / B14

- 1) Entryway..... 2,80 m²
- 2) Living Room 18,31 m²
- 3) Bedroom 11,55 m²
- 4) Bathroom 3,21 m²
- 5) Balcony..... 2,22 m²

- 6) Balcony..... 5,29 m²
- Net Area 43,34 m²**
- Gross Area 50,74 m²**



2+1 54 m²
 B6 / B9 / B12 / B15

1) Entryway.....	5,56 m ²
2) Living Room	16,14 m ²
3) Bedroom	8,36 m ²
4) Bedroom	4,72 m ²
5) Bathroom	3,75 m ²

6) Balcony.....	4,29 m ²
7) Balcony.....	5,54 m ²

Net Area	48,36 m²
Gross Area	54,19 m²



2+1 51 m²
 B7 / B10 / B13 / B16

- 1) Entryway..... 5,56 m²
- 2) Living Room 16,14 m²
- 3) Bedroom 8,51 m²
- 4) Bedroom 4,72 m²
- 5) Bathroom 4,95 m²

- 6) Balcony..... 4,79 m²
- Net Area 42,07 m²**
- Gross Area 50,79 m²**



Playground
Budvablua

BLOK A


BUDYABLUE
apartments

BUDYABLUE

GARAGE A



Playground
Budvablue

BLOCK B

GARAGE B



Fullkon Group brings its long years of experience in architecture, construction and accommodation to Europe and its rising star, Montenegro. Fullkon Group set out to add value to Montenegro. Fullkon Group is a participation of Emre Group which signed many projects since 1995 in Turkey.

Our mission, with the projects that combine modern architecture with comfort and trust, it is to build structures that respects nature and add value to the people.

www.fullkongroup.com

EMREGROUP



Emre Group has been built many houses which is a model in modern urbanization in Istanbul. Emre Group produces sustainable projects that are suitable for the texture of the city, sensitive to the environment, protecting the nature. Emre Group has signed many projects that are exemplary in Turkey with its construction and material quality, and also produces architectural projects on an international scale and engages in real estate development activities.

Emre Group provide services with its perspective of
"safe buildings, happy lives".

www.emregroup.com.tr



BUDVABLUE

apartments



p. +382 67 886 106
Topliski Put BB 85310, Budva, Montenegro.



p. +90 212 320 77 55
m. +90 532 251 61 85
Halil Rifat Paşa Mah. İlhanlı Sk. No: 2, İstanbul, Turkey.

info@fullkongroup.com | www.fullkongroup.com

www.budvablue.com



The architectural projects in this catalog consist of a design for the building to be built. The manufacturer reserves the right to make changes on the plans in the catalog without prior notice. The details and equipment in the catalog are optional if they are not included in the technical specification, contract annex projects and site list.



BUDVABLUE

apartments

www.budvablue.com